



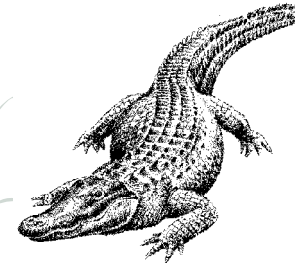
Brazos Bend State Park

Volunteer Group:
Brazos Bend State Park Volunteer Organization — your contributions help protect and preserve this natural wonder for future generations. To find out more, ask at headquarters or call 979-553-5101.

Please Note:

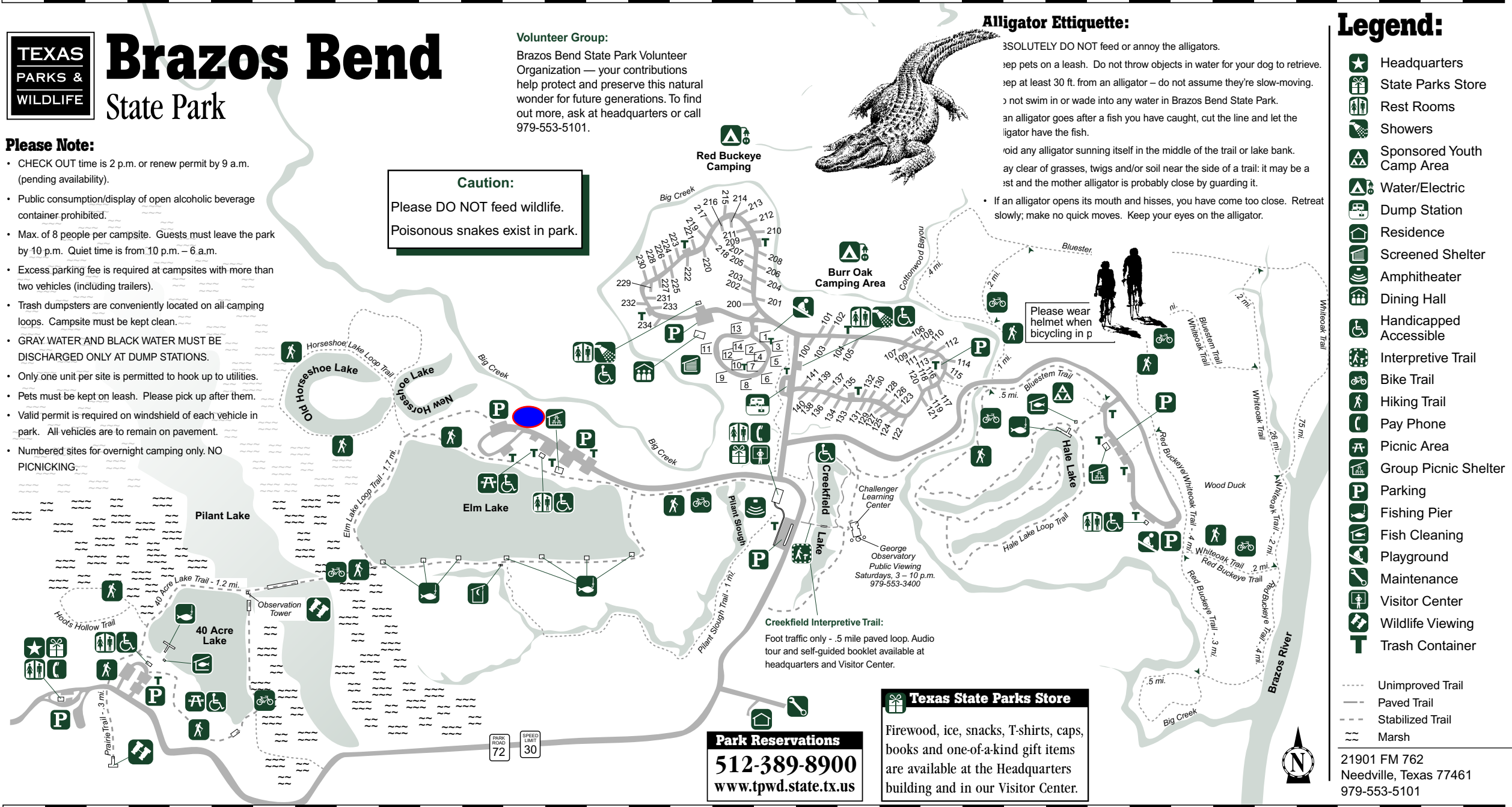
- CHECK OUT time is 2 p.m. or renew permit by 9 a.m. (pending availability).
- Public consumption/display of open alcoholic beverage container prohibited.
- Max. of 8 people per campsite. Guests must leave the park by 10 p.m. Quiet time is from 10 p.m. – 6 a.m.
- Excess parking fee is required at campsites with more than two vehicles (including trailers).
- Trash dumpsters are conveniently located on all camping loops. Campsite must be kept clean.
- GRAY WATER AND BLACK WATER MUST BE DISCHARGED ONLY AT DUMP STATIONS.
- Only one unit per site is permitted to hook up to utilities.
- Pets must be kept on leash. Please pick up after them.
- Valid permit is required on windshield of each vehicle in park. All vehicles are to remain on pavement.
- Numbered sites for overnight camping only. NO PICNICKING.

Caution:
Please DO NOT feed wildlife.
Poisonous snakes exist in park.



Alligator Etiquette:

- ABSOLUTELY DO NOT feed or annoy the alligators.
- Keep pets on a leash. Do not throw objects in water for your dog to retrieve.
- Keep at least 30 ft. from an alligator – do not assume they're slow-moving.
- Do not swim in or wade into any water in Brazos Bend State Park.
- If an alligator goes after a fish you have caught, cut the line and let the alligator have the fish.
- Avoid any alligator sunning itself in the middle of the trail or lake bank.
- Stay clear of grasses, twigs and/or soil near the side of a trail: it may be a nest and the mother alligator is probably close by guarding it.
- If an alligator opens its mouth and hisses, you have come too close. Retreat slowly; make no quick moves. Keep your eyes on the alligator.



Legend:

- ★ Headquarters
- 🎁 State Parks Store
- 🚻 Rest Rooms
- 🚿 Showers
- 🏕️ Sponsored Youth Camp Area
- ⚡ Water/Electric
- 🗑️ Dump Station
- 🏠 Residence
- 🎪 Screened Shelter
- 🎭 Amphitheater
- 🍽️ Dining Hall
- ♿ Handicapped Accessible
- 📖 Interpretive Trail
- 🚲 Bike Trail
- 🚶 Hiking Trail
- ☎️ Pay Phone
- 🌳 Picnic Area
- 🏠 Group Picnic Shelter
- P Parking
- 🎣 Fishing Pier
- 🐟 Fish Cleaning
- 🎮 Playground
- 🔧 Maintenance
- 👤 Visitor Center
- 🦋 Wildlife Viewing
- T Trash Container

- Unimproved Trail
- Paved Trail
- - - Stabilized Trail
- ~ Marsh

21901 FM 762
Needville, Texas 77461
979-553-5101

Park Reservations
512-389-8900
www.tpwd.state.tx.us

Texas State Parks Store
Firewood, ice, snacks, T-shirts, caps, books and one-of-a-kind gift items are available at the Headquarters building and in our Visitor Center.

In accordance with Texas State Depository Law, this publication is available at the Texas State Publications Clearinghouse and/or Texas Depository Libraries.
© 2002 Texas Parks and Wildlife Department PWD MP P4504-110L (7/02)

